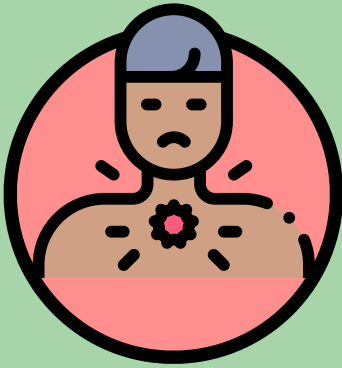




BEFORE YOU SET OUT



SYMPTOMS?

Please do not attend if you are experiencing any symptoms associated with Covid-19 - stay home!



HYGIENE

Please wash your hands thoroughly before you leave home (for more than 20seconds).

ON ARRIVAL AT CHURCH



SANITIZE

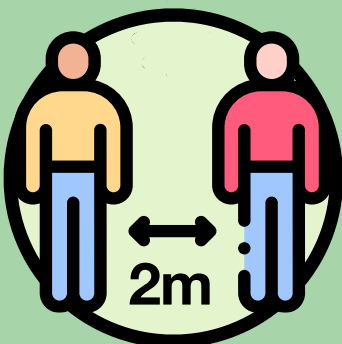
On arrival, please clean your hands thoroughly with the anti-bacterial hand gel provided.



COVER UP

It is a requirement of law to wear face-coverings for the duration of the service *

** apart from medical exemption*



SOCIAL DISTANCE

Please maintain a distance of at least **2metres** from anyone who is not a member of your household.